

Finishes & Colours

Pre-finished Boards

All the Card Unit + Counter range are finished Cream, White or Grey as standard.



Please call for colour sample boards.

Impact edges

All the Card Unit + Counter range have the below options for edging detail.



- ACC1**
Laminated top (standard grade)
1200mm wide or less £50
Laminated top (standard grade)
1500mm wide or more £67
Laminated top (high grade)
1200mm wide or less £67
Laminated top (high grade)
1500mm wide or more £83



- ACC3**
Lino top (standard grade)
1200mm wide or less £83
Lino top (standard grade)
1500mm wide or more £117
Lino top (high grade)
1200mm wide or less £100
Lino top (high grade)
1500mm wide or more £133



- ACC5**
Extra glass shelf + brackets
1200mm wide or less £30
Extra glass shelf + brackets
1500mm wide or more £40
Extra solid shelf fitted
1200mm wide or less £25
Extra solid shelf fitted
1500mm wide or more £33



- ACC7**
Solid sliding doors (large)
1200mm wide or less £58
Solid sliding doors (large)
1500mm wide or more £75
Solid sliding doors (small)
1200mm wide or less £42
Solid sliding doors (small)
1500mm wide or more £58



- ACC9**
Glass sliding doors (large)
1200mm wide or less £67
Glass sliding doors (large)
1500mm wide or more £100
Glass sliding doors (small)
1200mm wide or less £50
Glass sliding doors (small)
1500mm wide or more £83



- ACC11**
Castors -
(Standard) Fitted to counter:
1200mm wide or less £53
1500mm wide or more £70
(Heavy duty) Fitted to counter:
1200mm wide or less £80
1500mm wide or more £97

Accessories



- ACC2**
90mm Cable grommit.
Cream, White or Grey
Fitted to counter top £8



- ACC4**
Standard size Files drawer.
Fitted to counter £58
As above including Files £83
As above including Folders £95
600mm wide maximum



- ACC6**
Standard pull-out drawer.
Fitted to counter £42
600mm wide maximum
130mm high internal
440mm deep internal



- ACC8**
Standard video drawer.
Fitted to counter £50
600mm wide maximum



- ACC10**
Drawer / Door lock.
Standard lock fitted £25
Slam-lock (drawers) fitted £30



- ACC12**
Lighting.
Flourescent light 3ft £43
Flourescent light 4ft £47
Flourescent light 5ft £53
Flourescent light 6ft £57

When Plumline was formed in the early 1980's a market was quickly established for affordable standard shop equipment of good quality and for quick delivery.

Times may change, but our customers still demand the same criteria of quality and value in a retail environment where lead times are shorter, the choice of finishes is wider and individually designed units outsell standards two to one.



Plumline Bespoke Joinery.
We have included in this brochure many photographs from previous projects to give you and your clients inspiration and ideas, from simple sketch your ideas become shopfittings.

We can give you the shape, style, finish and delivery you need at an affordable price.

The details below are designed to make your ordering experience as hassle free as possible.

Standard Range

Counters / Card units will be supplied with a black plinth unless stated on the order otherwise.

Standard counters can be manufactured with a metal bullnose front edge, please state on order.

All standard glazed counters/showcases come complete with Float glass, Toughened glass can be supplied if stated on order. Toughened glass counters will incur longer lead times and will be charged 25% more than the Float counters.

Specials

When ordering special units a full CAD working drawing is available on request.

Quotations

Special quotations are available on request, full drawings are required to formulate an accurate costing.

All quotations are valid for a 3 month period.

Ordering

All telephone orders must be confirmed by fax / post to avoid confusion.

All colours and sizes must be stated clearly with the inclusion of a drawing if necessary.

Deliveries

Deliveries are free to mainland UK addresses for orders over £80, for orders under £80 there will be a delivery charge, this is priced on weight.

If the delivery is not mainland UK or is north of Perth (Scotland) please call.

Deliveries are made between 6am - 6pm Monday to Friday, approximate times and drivers mobile numbers are available on request two days before the delivery is scheduled.

Drivers are unaccompanied when delivering, it is essential that there is adequate manpower available on site to help the driver off-load.

All goods must be checked and signed for on delivery.



Copyright Plumline Display Ltd 2006. All images and contents of this publication are the property of Plumline Display Ltd and cannot be reproduced by any media or persons without our written consent.





Adcu

Storage drawers
15 Plastic tiers



Castors available
at extra cost



Hgcu15

11 Plastic tiers

Hanging arms



Edcu

21 Plastic tiers

Storage drawers



Hgcu21

15 Plastic tiers

Hanging arms



Adcu-corner

15 Plastic tiers

Cut

11 Plastic tiers



Ideal for using with shelving



Solid & Slatted
backpanels available
at extra cost

All standard card units are constructed from 18mm Melamine faced chipboard in standard colours of cream, white or grey. They are produced in a variety of sizes up to 1500mm long and standard sizes as below. Production of special sizes and specifications are available on request. Display steps are manufactured from interlinking rigid PVC sections to prevent cards falling between tiers.

Retail Price £

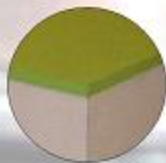
Retail Price £

Reference	Dimensions W x H x D	Plain	Woodgrain	Reference	Dimensions W x H x D	Plain	Woodgrain
Adcu 650	650 x 1400 x 600	£188.50	£208.50	Edcu 650	650 x 1800 x 640	£266.50	£286.50
Adcu 1000	1000 x 1400 x 600	£198.50	£218.50	Edcu 1000	1000 x 1800 x 640	£276.50	£296.50
Adcu 1250	1250 x 1400 x 600	£208.50	£228.50	Edcu 1250	1250 x 1800 x 640	£286.50	£306.50
Hgcu15 650	650 x 1400 x 600	£266.50	£286.50	Hgcu21 650	650 x 1800 x 640	£325	£345
Hgcu15 1000	1000 x 1400 x 600	£276.50	£296.50	Hgcu21 1000	1000 x 1800 x 640	£335	£355
Hgcu15 1250	1250 x 1400 x 600	£286.50	£306.50	Hgcu21 1250	1250 x 1800 x 640	£345	£365
Adcu-corner	600 x 1400 x 600	£257	£277	Cut 650	650 x 870 x 600	£120	£130
				Cut 1000	1000 x 870 x 600	£133	£143
				Cut 1250	1250 x 870 x 600	£150	£160

Solid Counters

Display Counters

Bco



Laminated tops available at extra cost

25mm tops as standard

Ts



Tsr

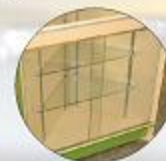


100mm plinths

Castors available at extra cost



Gc1



Glass doors available at extra cost

Gc1 3/4 Vision Display Also available full glass



Solid doors available at extra cost



Lighting available at extra cost

Gc2



Retail Price £

Retail Price £

Reference	Dimensions W x H x D	Plain	Woodgrain
Bco 1000	1000 x 900 x 600	\$221	\$251
Bco 1200	1200 x 900 x 600	\$225	\$255
Bco 1800	1800 x 900 x 600	\$279	\$309
Bco 2400	2400 x 900 x 600	\$338	\$368
Ts 500	500 x 900 x 600	\$170	\$200
Ts 600	600 x 900 x 600	\$186	\$216
Tsr 500	500 x 900 x 600	\$170	\$200
Tsr 600	600 x 900 x 600	\$186	\$216

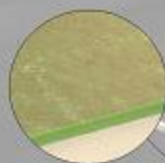
Reference	Dimensions W x H x D	Plain	Woodgrain
Gc1 1000	1000 x 900 x 600	\$343	\$373
Gc1 1200	1200 x 900 x 600	\$357	\$387
Gc1 1800	1800 x 900 x 600	\$500	\$530
Gc1 2000	2000 x 900 x 600	\$514	\$544
Gc2 1000	1000 x 900 x 600	\$286	\$316
Gc2 1200	1200 x 900 x 600	\$300	\$330
Gc2 1800	1800 x 900 x 600	\$371	\$401
Gc2 2000	2000 x 900 x 600	\$386	\$416

Counter Units

Page 5 Page 6

Counter Units

Gec



Marmoleum tops available at extra cost

Sc



Dr



Solid top version available



Cr



Oc



Castors available at extra cost

100mm plinths

Cable outlets available at extra cost



Cc



Lighting available at extra cost



Drawers available at extra cost



Retail Price £

Retail Price £

Reference	Dimensions W x H x D	Plain	Woodgrain
Gec 500	500 x 900 x 500	£286	£306
Sc 500	500 x 900 x 500	£156	£176
Oc 500	500 x 900 x 500	£169	£189
Gec 600	600 x 900 x 600	£286	£306
Sc 600	600 x 900 x 600	£156	£176
Oc 600	600 x 900 x 600	£169	£189

Reference	Dimensions W x H x D	Plain	Woodgrain
Dr 1000	1000 x 900 x 600	£286	£316
Dr 1200	1200 x 900 x 600	£296	£326
Dr 1800	1800 x 900 x 600	£390	£420
Dr 2400	2400 x 900 x 600	£455	£485
Cr 1000	1000 x 900 x 600	£383	£413
Cr 1200	1200 x 900 x 600	£393	£423
Cr 1800	1800 x 900 x 600	£442	£472
Cr 2400	2400 x 900 x 600	£507	£537
Cc 1200	1200 x 900 x 600	£429	£459
Cc 1500	1500 x 900 x 600	£463	£493
Cc 1800	1800 x 900 x 600	£500	£530

18mm Melamine construction, 25mm Melamine tops. Hi-impact 3mm heat - sealed PVC edging
6mm float glass (Toughened available 25% extra).

Counter Units

Page 7 Page 8

Counter Units

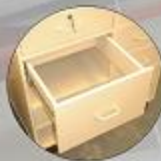
Hop



Stepped display with acrylic risers
Storage to rear



Solid doors to rear at extra cost



Files drawers to rear at extra cost

Top section extra



New

Sloping shelves for news

Crc

Shelves to rear



Complete with crisp baskets
1No divider per basket

Clo



Glass front, glass sides, glass top
2No glass shelves



Glass display area

Glass sliding doors, glass top + front
Storage area to rear
2No glass shelves

Cre

Complete with crisp sections and wire risers to front
Shelves to rear



Lighting available at extra cost



Castors available at extra cost

Retail Price £

Retail Price £

Reference	Dimensions W x H x D	Plain	Woodgrain
Hop 1000	1000 x 900 x 600	£300	£330
Hop 1200	1200 x 900 x 600	£314	£344
Hop 1800	1800 x 900 x 600	£350	£380
Hop 2400	2400 x 900 x 600	£371	£401
Clo 1200	1200 x 900 x 600	£471	£501
Tro 1000	1000 x 900 x 600	£429	£459
Tro 1200	1200 x 900 x 600	£443	£473
Tro 1800	1800 x 900 x 600	£529	£559
Tro 2000	2000 x 900 x 600	£557	£587

Reference	Dimensions W x H x D	Plain	Woodgrain
New 1000	1000 x 900 x 600	£325	£355
New 1200	1200 x 900 x 600	£335	£365
New 1800	1800 x 900 x 600	£395	£425
New top section	600 x 300 x 600	£90	£100
Crc 1500	1500 x 900 x 600	£395	£425
Crc 2000	2000 x 900 x 600	£445	£475
Crc 2400	2400 x 900 x 600	£510	£540
Cre 1000	1000 x 900 x 600	£256	£286
Cre 1250	1250 x 900 x 600	£276	£306
Cre 1650	1650 x 900 x 600	£330	£360

18mm Melamine construction, 25mm Melamine tops. Hi-Impact 3mm heat-sealed PVC edging.
6mm Float glass (Toughened available 25% extra)



Swg2



Swg9



Many statwall fittings available from stock, call for more details.



Swg7

18mm Construction, 100mm pitch Statwall Plastic clip-in Inserts, Hi Impact PVC edges Cream, White or Grey standard finish.



Wms



Wds



Wrds

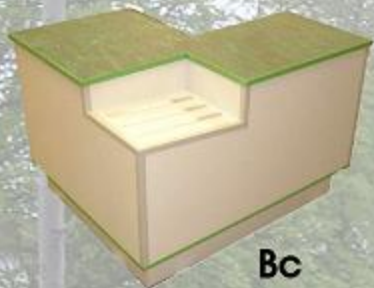


18mm Construction, Hi impact PVC edges, Glass adjustable shelves, Glass sliding doors (toughened at extra cost), Locks + Lights available at extra cost. Spotlights available at extra cost

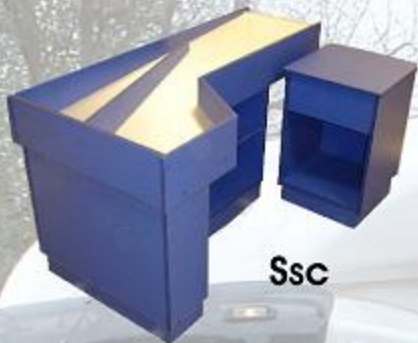
Retail Price £

Retail Price £

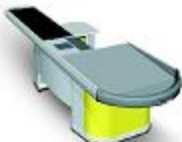
Reference	Dimensions W x H x D	Plain	Woodgrain	Reference	Dimensions W x H x D	Plain	Woodgrain
Swg2 1200	1200 x 1300 x 600	£279	£319	Wms 650	650 x 760 x 300	£207	£237
Swg7 600	600 x 1300 x 600	£290	£330	Wms 1000	1000 x 760 x 300	£229	£259
Swg7 1000	1000 x 1300 x 600	£320	£360	Wms 1200	1200 x 760 x 300	£243	£273
Swg9 300	300 x 1300 x 300	£257	£297	Wds 650	650 x 2000 x 400	£521	£551
				Wds 1000	1000 x 2000 x 400	£557	£587
				Wds 1200	1200 x 2000 x 400	£571	£601
				Wrds 650	650 x 2000 x 400	£651	£681
				Wrds 1000	1000 x 2000 x 400	£687	£717
				Wrds 1250	1250 x 2000 x 400	£701	£731



Bc



Ssc



The Langar Group offer a complete range of checkout counters for all applications. With competitive prices, heavy duty aluminium construction, full range of accessories available. Call 0115 9622617 Langar direct for a full brochure pack.



Wine Barrels:
Sizes to suit.
Additional understorage available.



Display shelves:
Straight or sloping.
Epos ticket rails.
Fully height adjustable.

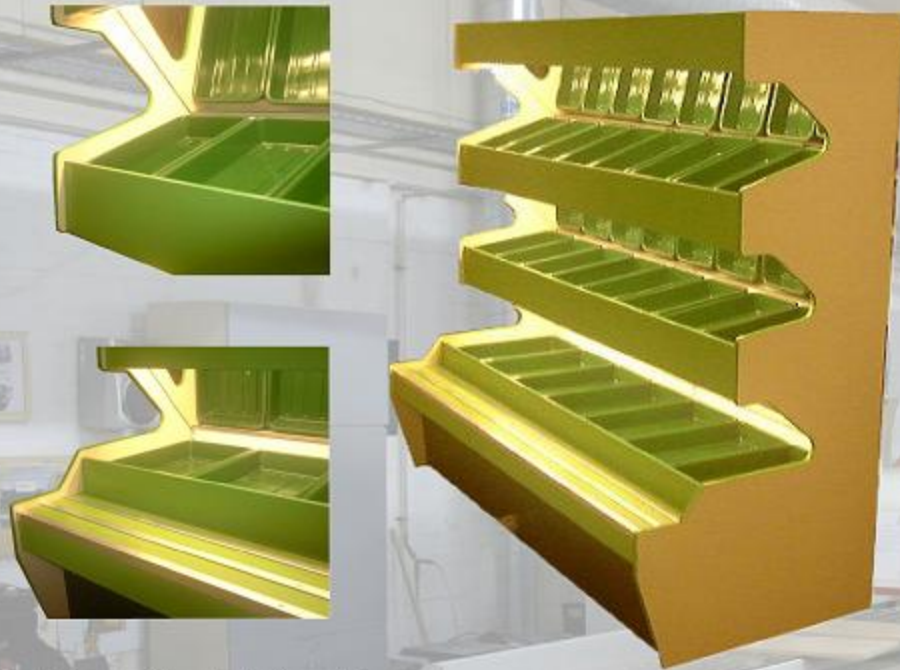
Retail Price £

Reference	Dimensions W x H x D	Plain	Woodgrain
Bc 1200	1200 x 780 x 1000	£357	£387
Bc 1500	1500 x 780 x 1000	£414	£444
Ssc 1570	1570 x 780 x 780	£707	£737

The ALL NEW Wines & Spirits shelving utilises the flexibility, strength and cost effective AMX 35 shelving system. Metal structure with attractive timber overlays make this system easy to assemble and very adaptable to any site from a small Store to a large Supermarket.

650 / 1000 / 1250 Bay sizes are available.
Heights and depths can be adapted to suit your site requirements.

Call us today:
*Full design service available.
*Photo CD available on request.
*Colour samples.
.....We are happy to oblige.



3-Tier Fruit + veg (shown in photograph)
 All Fruit + veg shelving is based on the AMX 35 modular metal shelving system
 All items delivered flat-pack for site assembly
 Green fruit + veg trays included
 Please call for more details

Mirrors + Lights extra



Fvg

2-Tier Fruit + Veg gondola,
 Gondola complete with 2 x 500 end units
 Green trays included
 Supplied in sections to site
 Ticket rail to shelf frontages

Mobile Fruit + Veg stand,
 Green trays included
 Heavy duty castors to base
 Ideal for temporary outdoor use

Fvm



Fvt

Plastic trays,
 Small = 465w x 280d x 85h
 Large = 600w x 330d x 85h



On castors



Retail Price £

Retail Price £

Reference	Dimensions W x H x D	Retail Price £
Fvs 1000 2 Tier	1000 x 2070 x 960	\$507 per bay
Fvs 1250 2 Tier	1250 x 2070 x 960	\$521 per bay
Fvs 1000 3 Tier	1000 x 2070 x 960	\$550 per bay
Fvs 1250 3 Tier	1250 x 2070 x 960	\$579 per bay
Fvs 1000 Mirrors	1000	\$43 per mirror
Fvs 1250 Mirrors	1250	\$50 per mirror
Fvs 1000 Lights	1000	\$43 per light
Fvs 1250 Lights	1250	\$43 per light
Fvs Shaped ends	960 x 2070	\$64 per end
Fvs Boxed corner	960 x 2070	\$95 per corner

Reference	Dimensions W x H x D	Retail Price £
Fvg - 2000	2000 x 1350 x 1400	\$1357
Fvg - 3000	3000 x 1350 x 1400	\$1643
Fvm - 900	900 x 1800 x 600	\$629
Fvm - 1200	1200 x 1800 x 600	\$671
Fvt - Small	465 x 85 x 280	\$6.79
Fvt - Large	600 x 85 x 330	\$12.86

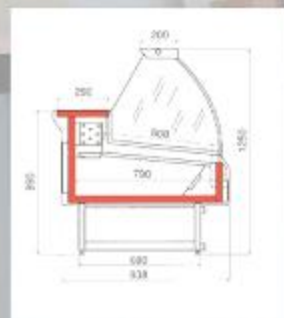
Bakery Display



Refrigerated and Ambient serve overs with colours to suit your retail outlet available from stock. One or Two upper shelf levels available with a curved or straight glass front profile. Till blocks can be made any size including internal and external till block corners.



Wm



Refrigerated Serve over:

This unit is ideal for small shops and stores, providing the perfect balance between the area used for display and the space available. The bottom, voluminous compartment can be used to store ready stock.

Temperature range - 1°C / + 5°C



Bdg Lighting extra



Baw Mirrors + Lighting extra



Bsi Mirror + Light included

Retail Price £

Retail Price £

Reference

Dimensions W x H x D

Ambient:		
Pa 1300	1300 x 1250 x 950	£1303
Pa 1600	1600 x 1250 x 950	£1360
Pa 1900	1900 x 1250 x 950	£1586
Till stand (to suit)	600 x 900 x 950	£560
Refrigerated:		
Pr 1300	1300 x 1250 x 950	£2337
Pr 1600	1600 x 1250 x 950	£2405
Pr 1900	1900 x 1250 x 950	£2832

Reference

Dimensions W x H x D

Bdg 900	900 x 1500 x 600	£550
Baw 1000	1000 x 2000 x 600	£483
Bsi 1000	1000 x 2200 x 600	£750

WM - Wood / Metal bakery display system.

Based on the AMX-35 shelving system the WM range of bakery shelving is fully adjustable and can be tailored in design, size and colour to suit any retail outlet. With modular shelving bays available 650, 1000 and 1250 wide the WM range can be multiplexed together to make a continuous display run. Call our sales team today with your requirements.



Staron 100% acrylic solid surface countertops can enhance the appearance of any counter. Available in more than 50 colours and a variety of edge details and inlay options, Staron is easily co-ordinated with your shops new or existing fixtures and paint colours. Despite Staron's elegance, it's a surface that's practical and easy to maintain. If the surface is ever scratched, it's easily repaired with a mild abrasive cleanser or a light-duty kitchen scrubbing pad. Staron is also nonporous with smooth, impenetrable seams, so germs and dirt have nowhere to accumulate.

Call our sales team with your counter requirements, colour sample brochure available on request.



New for 2006

Page 21 Page 22



Curved open corner unit to compliment the standard counter range.

2 No fixed curved shelves
18mm Carcase, 25mm Top

Occ

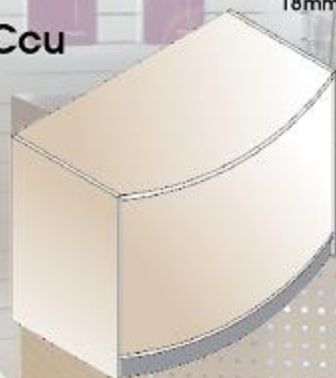
Solid corner unit to compliment the standard counter range.

2 No fixed curved shelves
18mm Carcase, 25mm Top



Ccc

Ccu



Solid counter unit to compliment the standard counter range.

2 No fixed curved shelves
18mm Carcase, 25mm Top



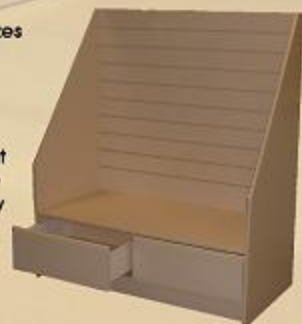
UV bonded Glass top display counters. Various sizes and applications available. Ideal for the uninterrupted display of hi-class goods. General storage to rear. 1/4 Glass display 3/4 Display with display shelves 1/4 Display infill corner Glass display tower unit with shelves.

Call for more details.

Plumline Display have invested heavily in new machinery. Using the latest SCM beam saws, our cutting service can accommodate many board sizes and thickness. Using the latest Homereg routers we can router many different materials in various shapes and sizes. The very latest edging technology enables Plumline to edge panels of any size, with a wide range of edging colours and sizes in stock. All the above services promise a quick lead time with small and large orders all catered for.



Circular Wines & Spirits island display stand. 4 No circular display shelves giving 360 degree display for central areas. Available in many finishes and sizes to suit space available.



Slatted back card display. Manufactured to compliment the standard card unit range complete with slatted display back and metal drawers to base. Many statwall accessories available.

Retail Price £

Reference	Dimensions W x H x D	Plain	Woodgrain
Occ 500	500 x 900 x 500	£240	£260
Ccc 500	500 x 900 x 500	£350	£370
Occ 600	600 x 900 x 600	£240	£260
Ccc 600	600 x 900 x 600	£350	£370
Ccu 1000	1000 x 900 x 600	£371	£401
Ccu 1200	1200 x 900 x 600	£375	£405
Ccu 1800	1800 x 900 x 600	£429	£459

18mm Melamine construction, 25mm Melamine tops. Hi-impact 3mm heat - sealed PVC edging 6mm Float glass (Toughened available 25% extra).